



**Department of
planning**
योजना विभाग
Faculty of Architecture & Ekistics
Jamia Millia Islamia, New Delhi
[a central university] NAAC A++ | NIRF 03

Date
02 @10.00hrs
09 | **2024**



Organizes

ONE-DAY WORKSHOP [ONLINE] ON

Settlement Hierarchy Analysis

by

Ms. Prajakta Sonar

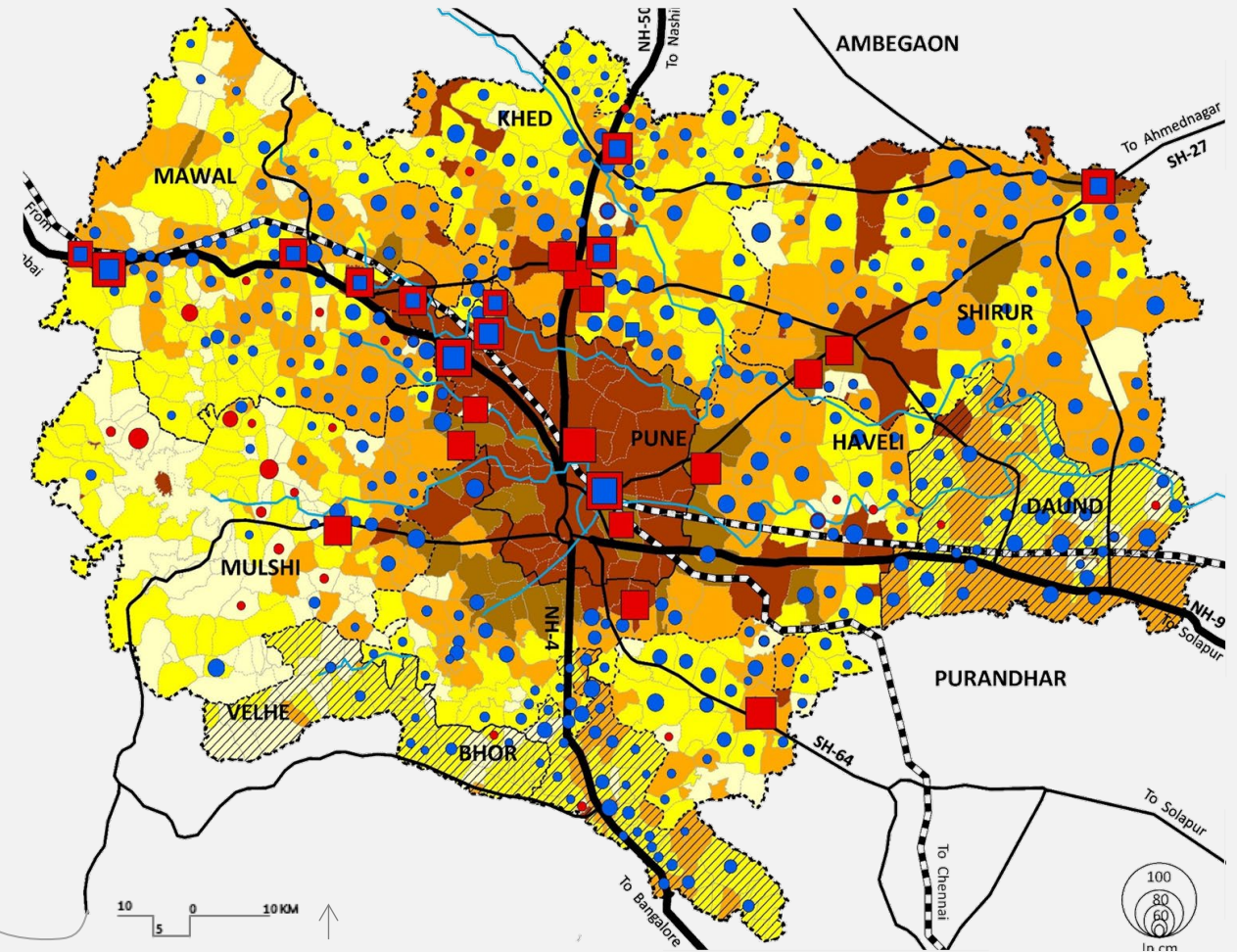
Urban-Regional Planner, Ph.D. [P]

Assistant Professor

MIT ADT University, Pune

About the workshop

The hierarchy of settlements is an analysis of the size, population, and services of any given settlement, be it a city or village, to regional planning. This concept is important, not just for the awareness of planners in the functions and relationships of the settlement, but also for guiding them in infrastructure development and growth. This assures balanced development within a region.



Map - Population Growth Rate, Pune Metropolitan Region, 2001-11

Map courtesy – Sakshi Godara, IPE Global Limited, INDIA